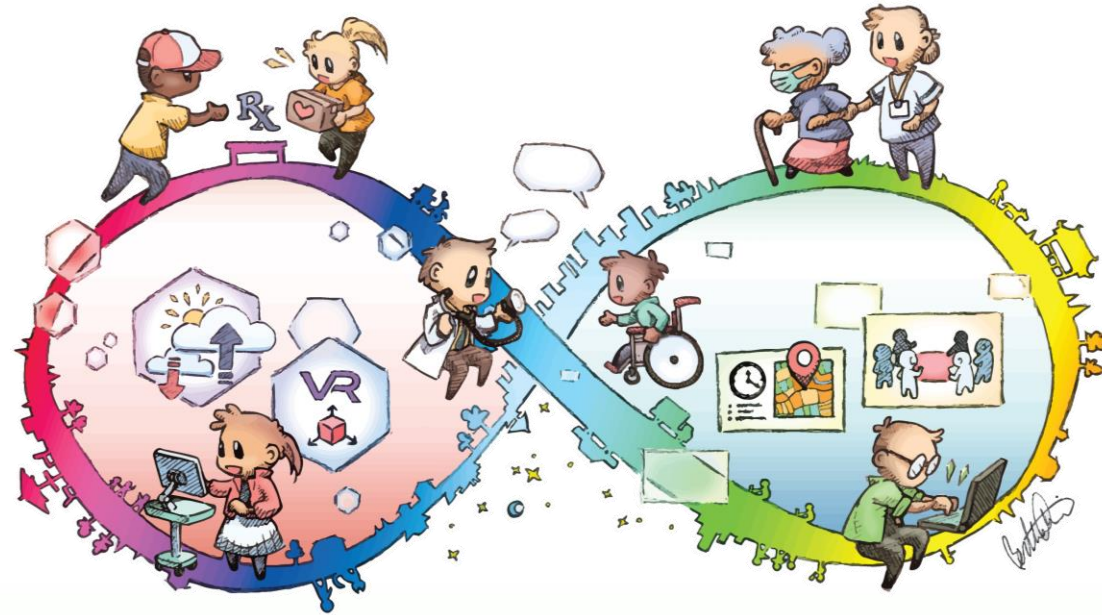


Mindful reflections of a small working group overcoming the barriers of End-of-Life Care (EOLC) at home



Dr KC Jonathan LAU
Omega International Health Service, Hong Kong

Background

- End-of-Life Care (EOLC) at home
- Inherently a complex issue
- Difficult to address
- Slow progress in Hong Kong
- Not a unique phenomenon

A small working group

Medical



- Dr Luke Tsang
- Dr Welgent Chu
- Dr Jonathan Lau
- Mutual Support

Counselling psychologist



- Miss Paula Yeung
- Compassionate
- Mutual Learning
- Mutual discussions

Counsellor & Social worker



- Miss Jennifer Wong
- Miss Ming Hui KO
- Hopes & Potentials
- Available & Accessible

The Barriers of End-of-Life Care at Home

Service

Time & incentives
Support & resources
Knowledge & experience gap

Social

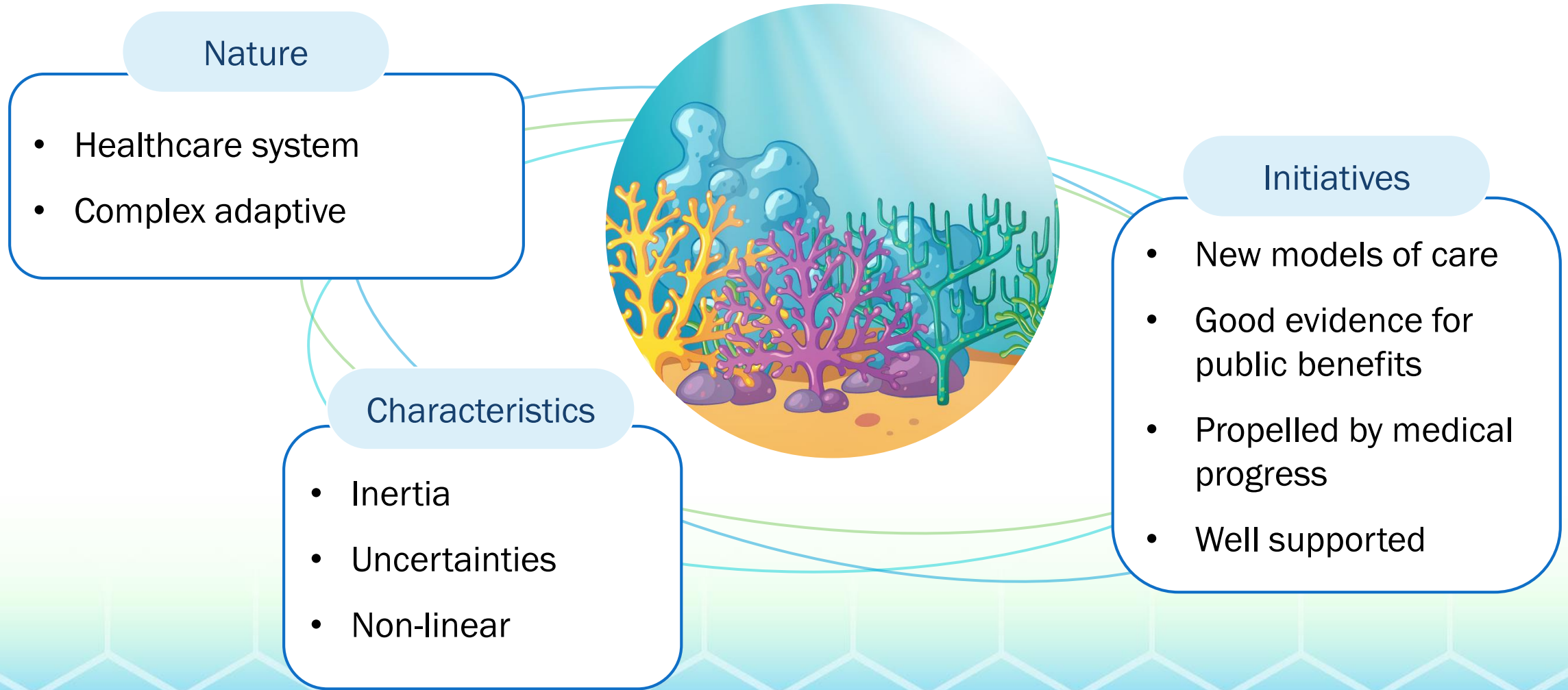
Affordability
Legal implications
Dealing with death

Cultural

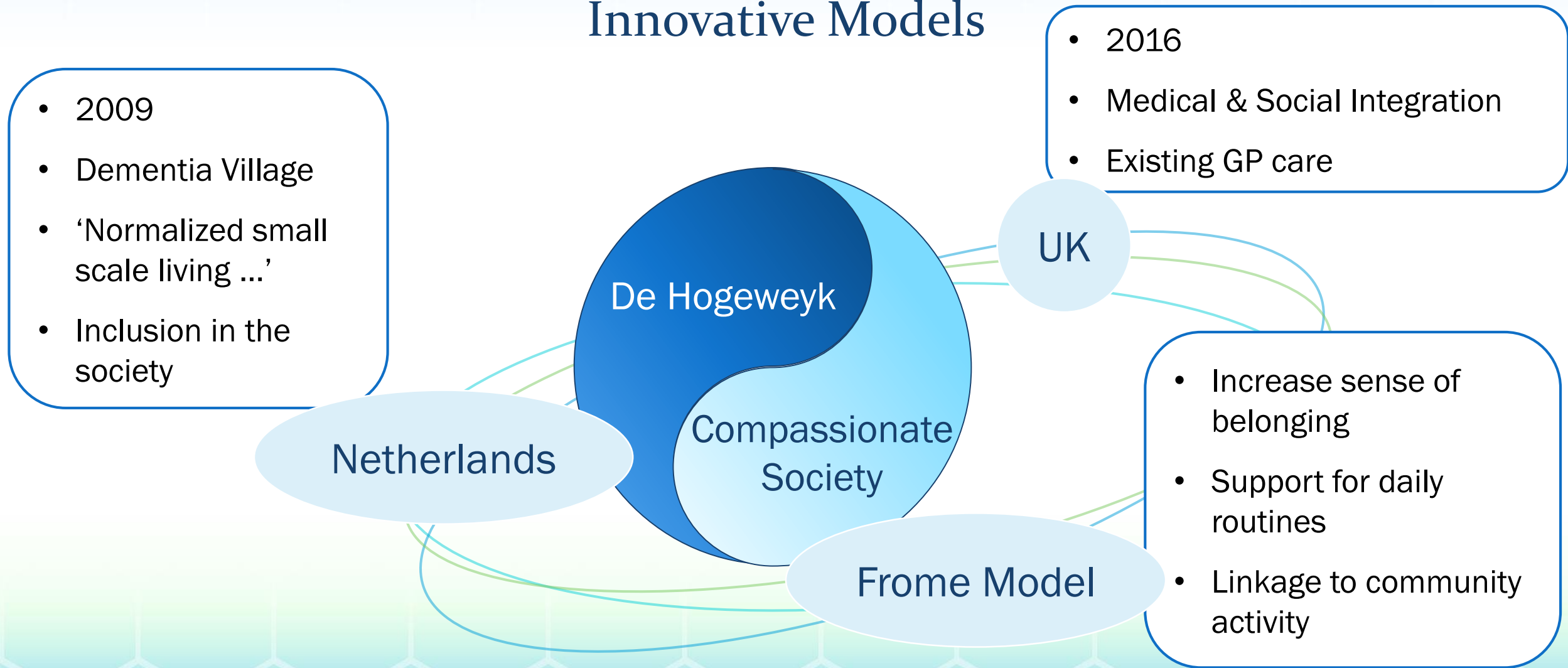
Taboo & little discussion
Decreasing property value
Reliance on public facilities



EOLC – a complex issue



Innovative Models



A vibrant, circular illustration featuring a multi-colored path (red, purple, blue, green, yellow) that winds through the scene. Various characters and icons are placed along this path and within the circular frame. At the top left, a boy in a yellow shirt and red cap runs, while a girl in a yellow shirt and orange skirt walks. Below them, a girl in a pink shirt and white skirt sits at a desk with a laptop. To her right, a boy in a blue shirt and brown pants runs. Further right, a girl in a red shirt and white skirt sits at a desk with a laptop. At the top right, an elderly woman in a blue shirt and white skirt walks, accompanied by a boy in a white shirt and blue pants. Below them, a boy in a green shirt and blue pants sits at a desk with a laptop. The path is decorated with various icons: a house, a sun, a lightbulb, a gear, a VR headset, a clock, a location pin, a group of people, and a person in a wheelchair. The entire scene is set against a white background with a subtle grid pattern.

People – centric

Frontline services

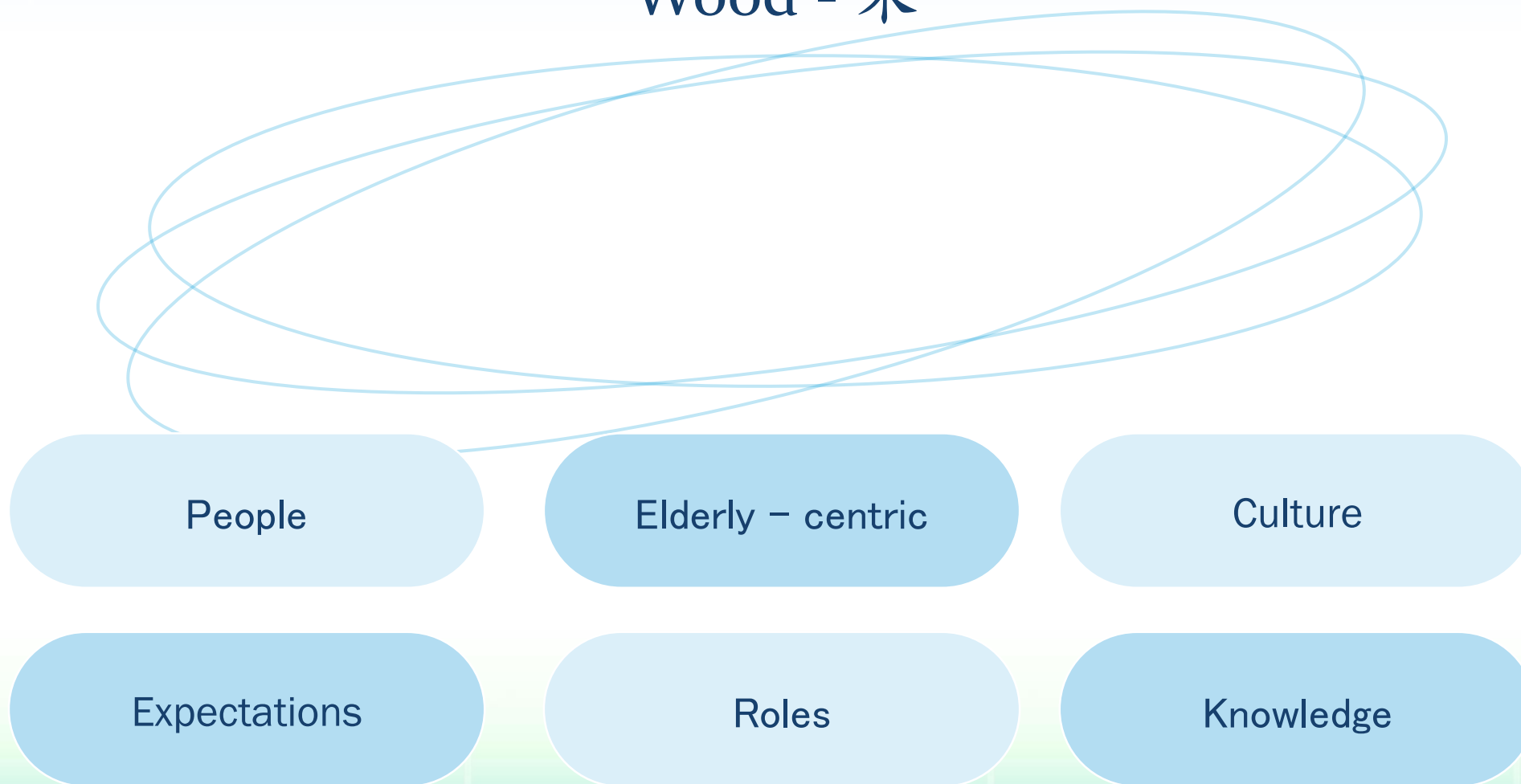
Time + 5E

- 5 E = 5 Elements
- Wood – Fire – Earth – Gold – Water
- To facilitate decision making
- A communication and exploration tool

Time



Wood - 木



Fire - 火



Earth - 土



Gold - 金



Water -水



Healthcare starts at home



A Compassionate Village

Dr KC Jonathan Lau
柳坤忠醫生